



*Soccer Association for Youth, USA*

# **SAY Referee Training Syllabus**

**LAWS:  
13 - 17**



Copyright SAY 2001

Updated 8/2008

Written By: The SAY National Rules & Referees Committee  
Charles Keaney, Director of Officials

# **LAW 13:**

# **Free-Kicks**



# **DIRECT FREE KICK**

**AWARDED**

**FOR ONE OF THE TEN (10)  
MAJOR FOULS**

**KICKER**

**CANNOT PLAY THE BALL A  
SECOND TIME IN  
SUCCESSION**

**CAN SCORE A GOAL ON  
THE FIRST TOUCH**

**ONLY AGAINST AN  
OPPONENT**

**NOT AGAINST OWN TEAM**

# **INDIRECT FREE KICK**

**AWARDED**

**FOR ANYTHING OTHER  
THAN A MAJOR FOUL**

**KICKER**

**CANNOT PLAY THE BALL A  
SECOND TIME IN  
SUCCESSION**

**BALL**

**MUST BE TOUCHED BY  
ANOTHER PLAYER BEFORE  
A GOAL CAN BE ALLOWED**

# **ALL FREE KICKS**

**TAKEN**

**FROM WHERE THE OFFENSE  
OCCURRED**

**EXCEPTIONS:**

**DIRECT FREE-KICKS IN  
OPPONENT'S PENALTY ARE  
(PENALTY KICK)**

**ANY FREE-KICK WITHIN OWN  
GOAL AREA**

**(BALL MAY BE PLACED  
ANYWHERE WITHIN GOAL  
AREA)**

# **ALL FREE KICKS**

**BALL**

**MUST BE STATIONARY**

**BALL IN PLAY**

**WHEN IT IS KICKED AND  
MOVES**

**MUST LEAVE KICKING  
TEAM'S OWN PENALTY  
AREA**

# OPPONENTS

**MUST MOVE AT LEAST 10 YDS.  
FROM THE BALL**

**WINGS - 8 YARDS**

**PASSERS - 6 YARDS**

**UNLESS ON THE GOAL-LINE  
- AND -  
BETWEEN THE GOAL-POSTS**

# KICKING TEAM

**MAY NOT TAKE KICK INSIDE  
OPPONENT'S GOAL AREA**

# KICKING TEAM

FROM WITHIN OWN PENALTY  
AREA

BALL MUST LEAVE THE  
PENALTY AREA INTO THE  
FIELD OF PLAY

ALL OPPOSING PLAYERS MUST  
BE 10 YDS. FROM BALL AND  
OUTSIDE PENALTY AREA

**WINGS - 8 YARDS**

**PASSERS - 6 YARDS**

ALL OPPOSING PLAYERS  
MUST REMAIN OUTSIDE  
PENALTY AREA UNTIL BALL  
LEAVES THE AREA



# **REFEREE'S SIGNAL**

## **DIRECT FREE KICK**

**POINT TO SPOT OF KICK**

**DIRECTION OF KICK**

## **INDIRECT FREE KICK**

**POINT TO SPOT OF KICK**

**DIRECTION OF KICK**

**HAND STRAIGHT UP IN AIR**

# **LAW 14:**

# **Penalty-Kick**



# **AWARDED**

**IF A DEFENDER COMMITS A  
MAJOR FOUL IN OWN PENALTY  
AREA**

# **KICKER**

**MUST BE IDENTIFIED TO THE  
REFEREE & GOALKEEPER**

**NOT ALLOWED TO FAKE THE  
KICK**

**CANNOT PLAY THE BALL A  
SECOND TIME IN SUCCESSION**

# **GOALKEEPER**

**MUST BE BETWEEN THE  
GOAL-POSTS**

**MUST HAVE BOTH FEET ON  
THE GOAL-LINE**

**ALLOWED TO MOVE ALONG  
THE GOAL-LINE PRIOR TO THE  
KICK**

**CANNOT MOVE FEET FORWARD  
UNTIL BALL IS IN PLAY**

# **ALL OTHER PLAYERS**

**MUST BE ON THE FIELD**

**MUST BE OUTSIDE THE  
PENALTY AREA**

**MUST BE OUTSIDE THE  
PENALTY ARC**

**MUST BE BEHIND THE  
PENALTY MARK**

# **THE BALL**

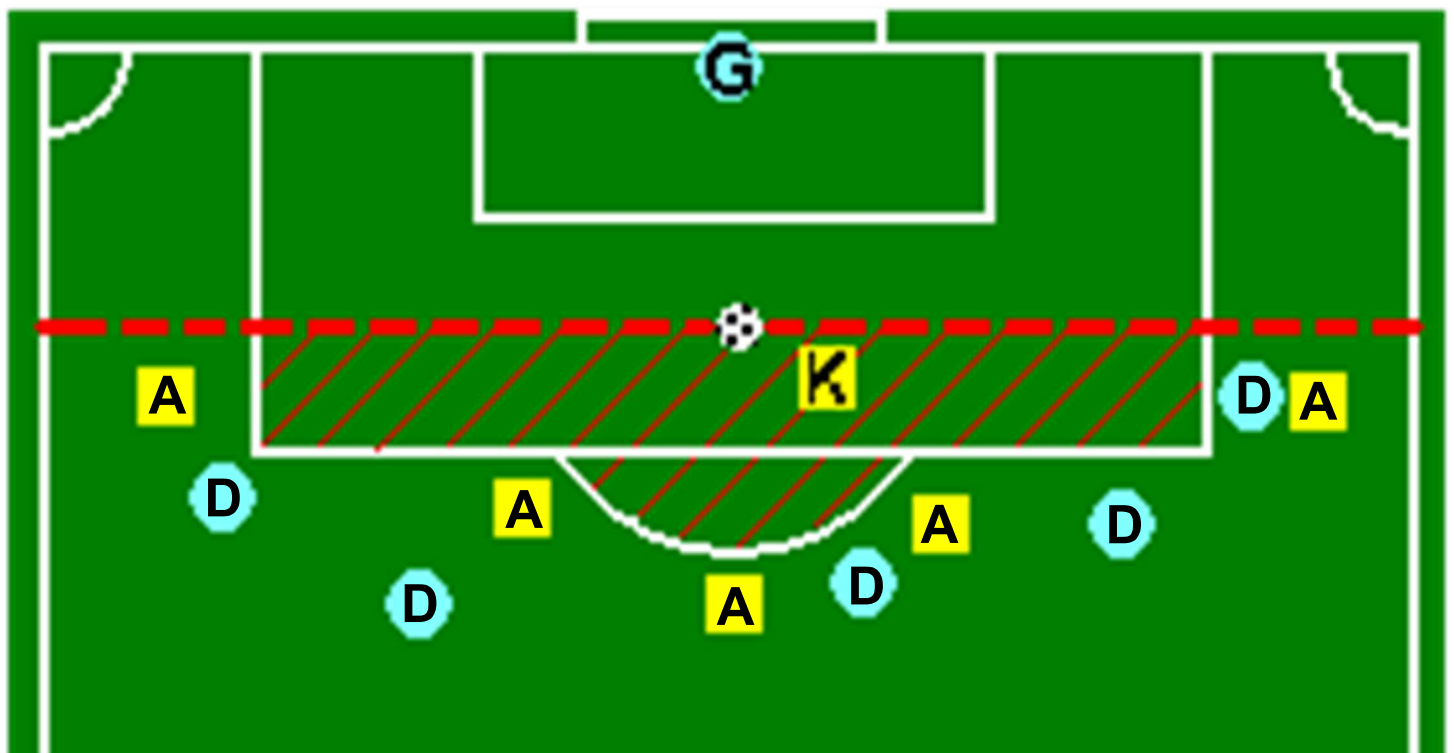
**MUST BE PLACED ON THE  
PENALTY MARK**

**MUST BE STATIONARY**

**MAY NOT BE KICKED UNTIL  
THE REFEREE SIGNALS WITH  
WHISTLE**

**IS IN PLAY WHEN IT IS  
KICKED AND MOVES FORWARD**

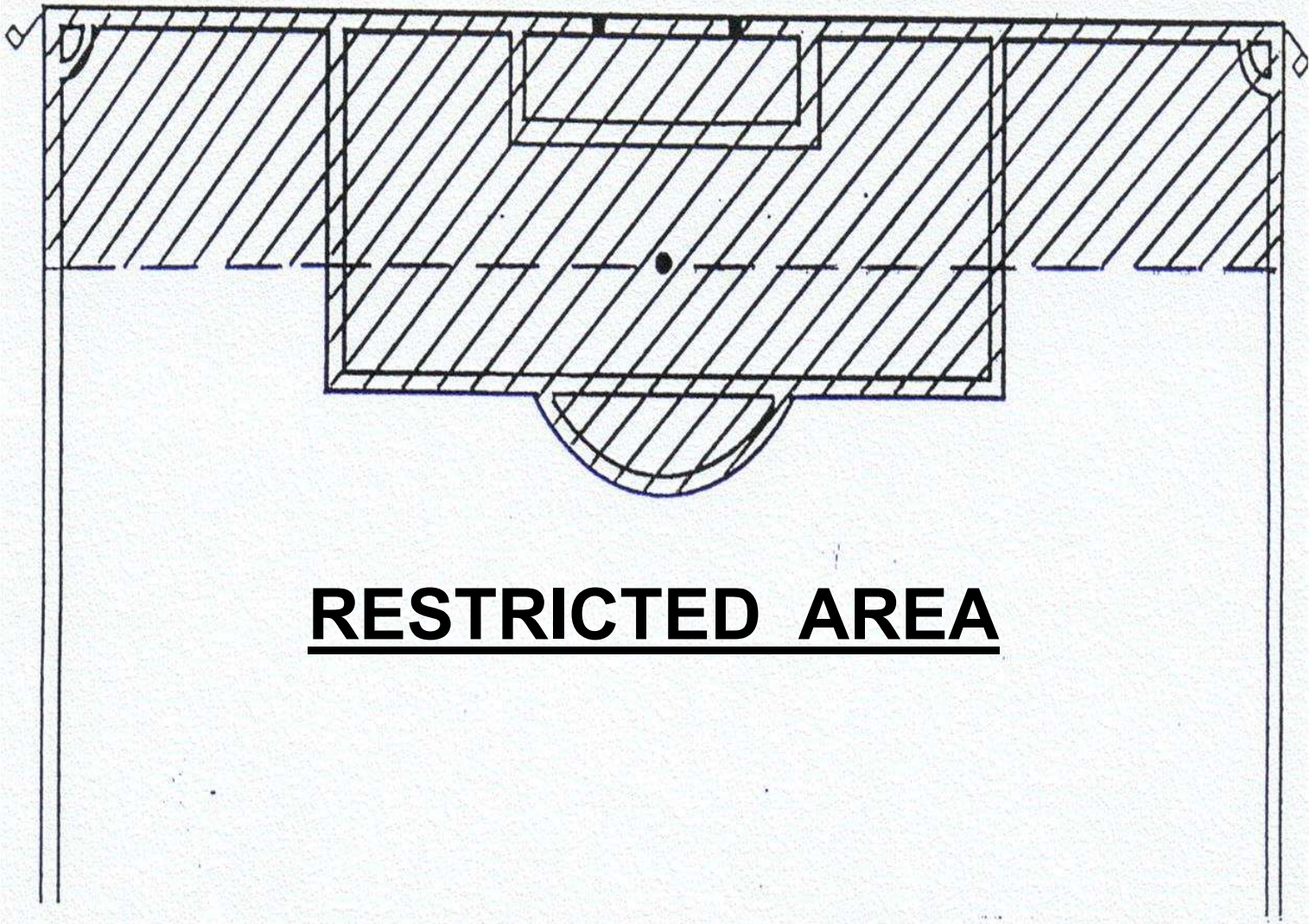
# PENALTY KICK



## LOCATION OF PLAYERS



# PENALTY KICK



RESTRICTED AREA



# **INFRINGEMENTS**

**BY BOTH TEAMS**

**RETAKE THE PENALTY-KICK**

**BY DEFENSE**

**IF GOAL IS SCORED,**

**LET IT STAND**

**IF GOAL IS NOT SCORED**

**RE-TAKE THE KICK**

# **INFRINGEMENTS**

## **BY OFFENSE**

**IF GOAL IS SCORED**

**DISALLOW**

**RE-TAKE THE KICK**

**IF GOAL IS NOT SCORED**

**STOP PLAY**

**RESTART WITH AN  
INDIRECT FREE KICK**

**AT SPOT OF  
INFRINGEMENT**

# Penalty Kick Chart

<b>RESULT OF PENALTY-KICK</b>	<b>NO VIOLATION</b>	<b>VIOLATION BY OFFENSE ONLY</b>	<b>VIOLATION BY DEFENSE ONLY</b>	<b>VIOLATION BY BOTH TEAMS</b>
<b>ENTERS GOAL</b>	<b>GOAL</b>	<b>RE-KICK</b>	<b>GOAL</b>	<b>RE-KICK</b>
<b>GOES DIRECTLY OVER GOAL-LINE OUT-OF-BOUNDS</b>	<b>GOAL KICK</b>	<b>INDIRECT FREE KICK</b>	<b>RE-KICK</b>	<b>RE-KICK</b>
<b>REBOUNDS INTO PLAY FROM GOAL OR OFF GOALKEEPER</b>	<b>CONTINUE PLAY</b>	<b>INDIRECT FREE KICK</b>	<b>RE-KICK</b>	<b>RE-KICK</b>
<b>SAVED &amp; HELD BY GOALKEEPER</b>	<b>CONTINUE PLAY</b>	<b>INDIRECT FREE KICK</b>	<b>RE-KICK</b>	<b>RE-KICK</b>
<b>DEFLECTED OUT-OF-BOUNDS BY GOALKEEPER</b>	<b>CORNER KICK</b>	<b>INDIRECT FREE KICK</b>	<b>RE-KICK</b>	<b>RE-KICK</b>

# **IMPORTANT POINTS**

**SIGNAL NOT GIVEN UNTIL  
EVERYONE IS IN PLACE**

**IF INFRINGEMENT OCCURS  
AFTER SIGNAL IS GIVEN:**

**ALLOW KICK TO PROCEED**

**THEN DECIDE HOW TO  
RESTART**

# **QUARTER (HALF)**

**SHALL BE EXTENDED FOR A  
PENALTY-KICK**

**THE PLAY ENDS WHEN:**

**A GOAL IS SCORED (ONE  
TOUCH BY THE KICKER)**

**THE BALL LEAVES THE  
FIELD OF PLAY**

**THE BALL REBOUNDS INTO  
PLAY AND COMES TO REST**

**THE BALL IS TOUCHED BY  
ANY PLAYER OTHER THAN  
THE GOALKEEPER**

# Brain Teaser

Time has expired but you must extend time for a Penalty Kick.

After blowing your whistle, the kicker hits a very hard shot that rebounds off the goal post to a member of the kicker's team.

That player takes a shot and kicks the ball into the goal.

What do you do?

# **LAW 15: Throw-in**



# **AWARDED**

**WHEN THE BALL GOES  
COMPLETELY OVER THE  
TOUCH-LINE**

**IN THE AIR ..... OR  
ON THE GROUND**

**FROM POINT WHERE THE  
BALL CROSSED THE TOUCH-  
LINE**

# **AGAINST**

**TEAM THAT LAST TOUCHED  
THE BALL**



# **THROWER**

**MUST FACE FIELD OF PLAY**

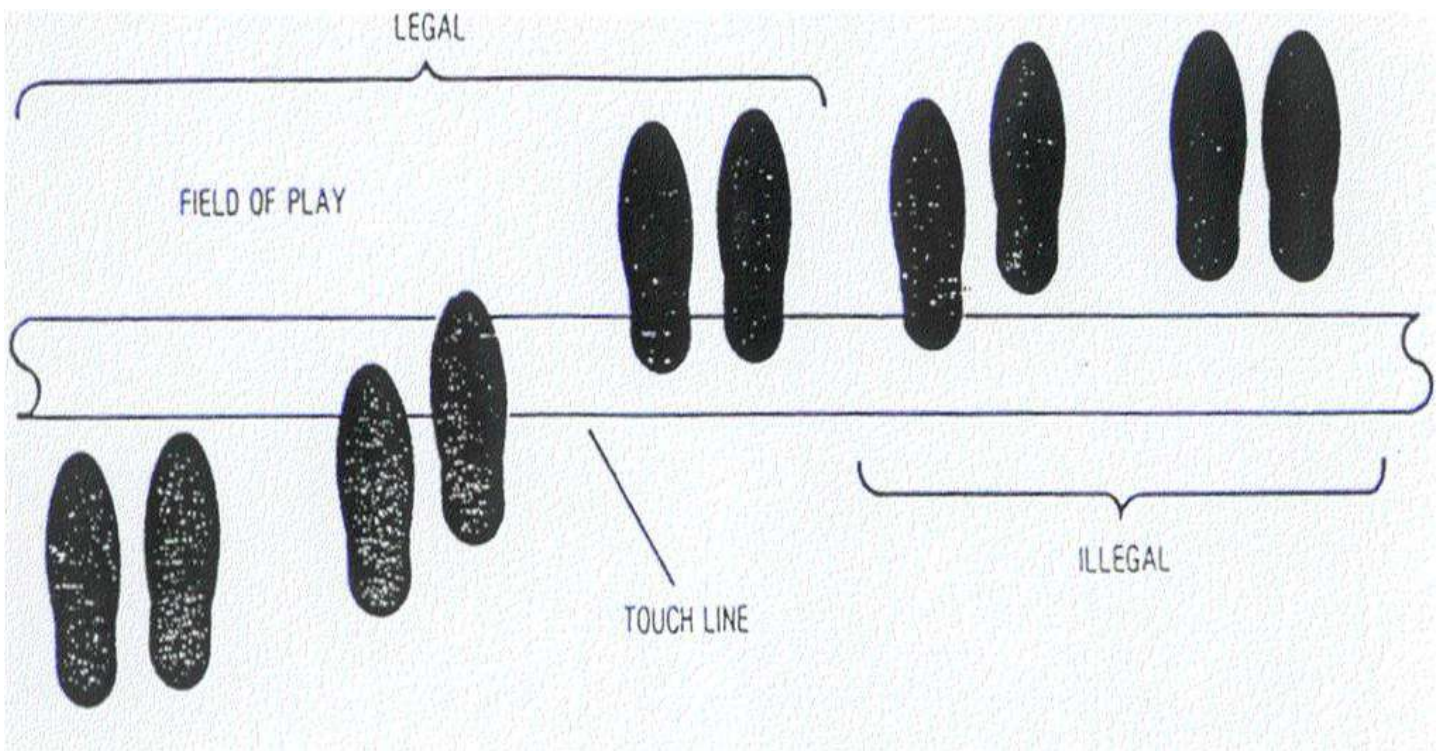
**MUST HAVE ALL OR PART OF  
BOTH FEET**

**ON THE GROUND**

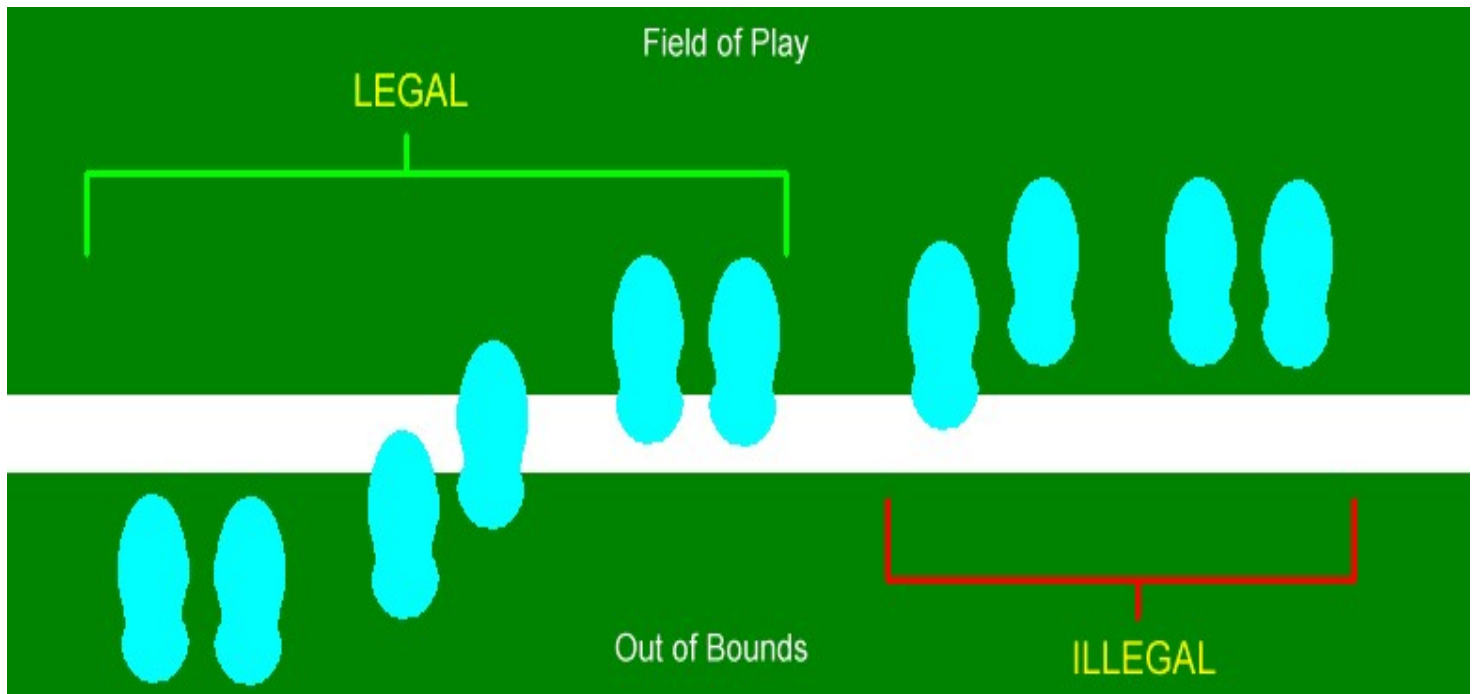
**ON OR OUTSIDE THE  
TOUCH-LINE**

**MUST USE BOTH HANDS TO  
THROW THE BALL**

**IN A CONTINUOUS MOTION  
FROM BEHIND AND OVER  
THE HEAD**



# THROW - IN



## LOCATION OF FEET

**BALL IS IN PLAY**

**WHEN ANY PART OF BALL  
ENTERS THE FIELD IN THE AIR**

**(CUTS THE PLANE OF  
THE TOUCH-LINE)**

**AND**

**HAS BEEN RELEASED FROM  
THE THROWER'S HANDS**

**IF TAKEN IMPROPERLY**

**OTHER TEAM IS AWARDED  
THROW-IN**

# **THROWER**

**MAY NOT TOUCH THE BALL  
TWICE IN SUCCESSION**

**A GOAL MAY NOT BE SCORED**

**DIRECT FROM A THROW-IN**

# **THE OFFSIDE LAW**

**DOES NOT APPLY AT THE  
TAKING OF A THROW-IN**

# **OPPONENT**

**MUST REMAIN AT LEAST 2-YARDS AWAY**

**CANNOT IMPEDE A THROW**

**CANNOT DISTRACT THE THROWER**

**BY JUMPING UP AND DOWN**

**OR**

**BY WAVING ARMS**

**IT IS A FOUL (STRIKING)**

**TO HIT AN OPPONENT WITH  
THE BALL VIOLENTLY**

# Brain Teaser

You are one of the referees in a passer game.

You see the ball go over the Touch-Line, but because the players were in a pack of 7 or 8 players you do not know which team kicked it last.

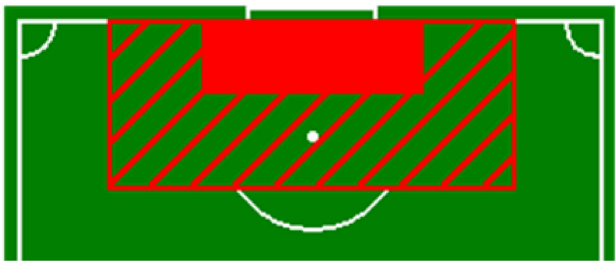
You are the referee closest to the play so everyone is looking to you for the call.

What do you do?



# **LAW 16: Goal-Kick**





**AWARDED**

**TO THE DEFENDING TEAM**

**WHEN THE BALL**

**GOES COMPLETELY OVER  
THE GOAL LINE**

**IN THE AIR ..... OR  
ON THE GROUND**

**AFTER LAST TOUCHING AN  
ATTACKING PLAYER**

# PLACE BALL

**ANYWHERE IN GOAL AREA  
(EXCEPT PASSERS)**

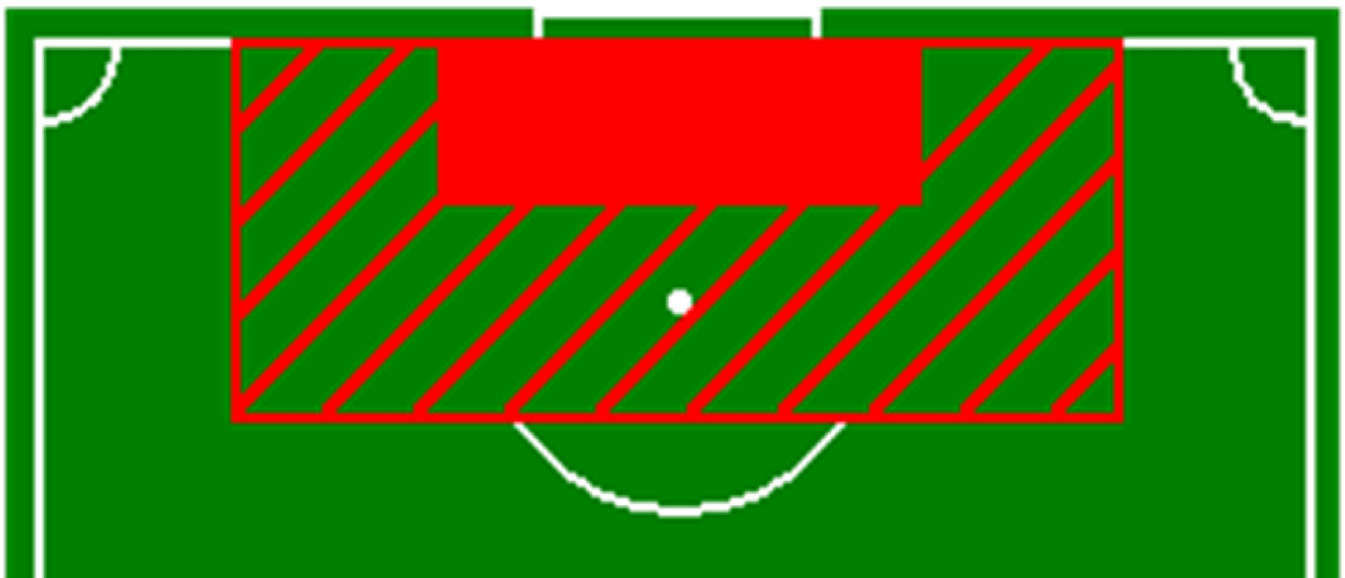


**AVOID TIME WASTING**

# OPPONENTS

**MUST REMAIN OUTSIDE THE  
PENALTY AREA**

**UNTIL THE BALL IS IN PLAY**



# BALL IN PLAY

**WHEN IT COMPLETELY LEAVES  
THE PENALTY AREA INTO THE  
FIELD OF PLAY**

# **RETAKE**

**IF BALL DOES NOT LEAVE  
PENALTY AREA ON ONE  
TOUCH**

# **KICKER**

**MAY NOT TOUCH THE BALL  
TWICE IN SUCCESSION**

# **GOAL**

**CAN BE SCORED DIRECTLY  
ONLY AGAINST THE OPPONENT**

# **PLAYERS**

**CANNOT BE OFFSIDE**

# **SIGNAL**

**DOES NOT HAVE TO BE A  
WHISTLE**

# Brain Teaser

You are the lead referee when the ball is kicked out by the attacking team.

The defending team very quickly gets the ball and places it properly in the Goal Area and takes the kick.

One of the opponents is a little slow in clearing the Penalty Area and has his back to the kick.

The ball hits the player and rebounds into the goal of the kicking team.

Since you are now the trail referee, everyone is looking to you to make the call. What do you do?



# **LAW 17:**

# **Corner-Kick**



**AWARDED**

**TO THE ATTACKING TEAM**

**WHEN THE BALL**

**GOES COMPLETELY  
OVER THE GOAL-LINE**

**IN THE AIR .... OR  
ON THE GROUND**

**AFTER LAST TOUCHING A  
DEFENDING PLAYER**

**PLACE BALL**

**IN THE NEAREST CORNER ARC**

**OPPONENTS**

**MUST REMAIN AT LEAST  
10 YDS. FROM BALL, EXCEPT:**

**WINGS - 8 YARDS**

**PASSERS - 6 YARDS**

**UNTIL THE BALL IS IN PLAY**

# **BALL IN PLAY**

**WHEN IT HAS BEEN KICKED  
AND MOVES**

## **KICKER**

**MAY NOT TOUCH THE BALL  
TWICE IN SUCCESSION**

**GOAL**

**MAY BE SCORED DIRECTLY**

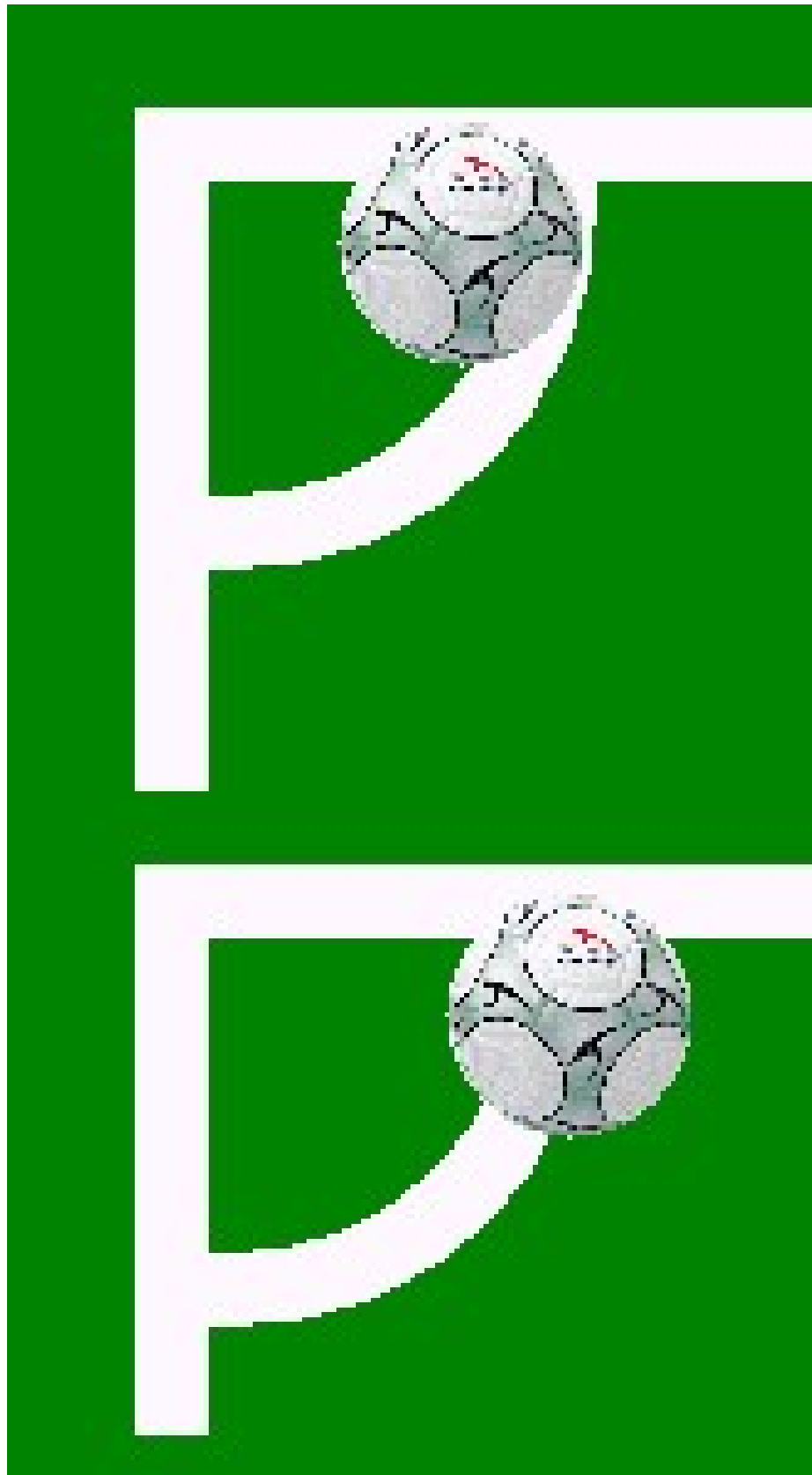
**PLAYERS**

**CANNOT BE OFFSIDE**

**SIGNAL**

**DOES NOT HAVE TO BE A  
WHISTLE**

# CORNER KICK – BALL PLACEMENT







# Brain Teaser

You are the lead referee when the ball is kicked out by the defending team.

The attacking team now very quickly gets the ball and places it properly in the corner arc and takes the kick.

The ball hits the near goal post and rebounds to the kicker.

The kicker makes a beautiful banana kick right into the goal.

Your referee partner blows the whistle signaling a goal.

What do you do?